

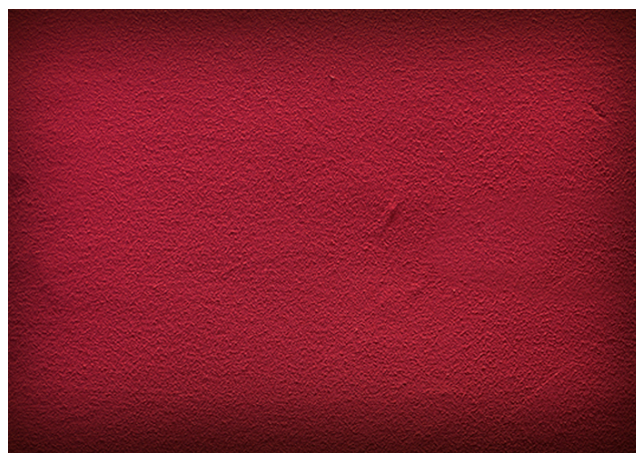
CALCE INTONACO



Plaster for internal and external spaces

Permeable to water vapour

Resistant to external agents



Code	0840
Description	Lime plaster for internal and external spaces, permeable to water vapour; it is composed of natural raw materials such as lime and aggregates free of soluble salts.
Use	This product is used as plaster on any type of wall, provided it has been rendered in advance. Avoid its use on plaster - based substrates. « CALCE INTONACO » can be overpainted with silicate, lime and siloxane paints.
Appearance of the film	Matt
Color	White
Component	1
Hardening	Physical hardening and through chemical reaction of lime and carbon dioxide

Specific weight	Da 1,640 gr/ml
Theoretical consumption	1,2 kg / m ² for 1mm of thickness 2-2,5 kg / m ² for 1,5 mm of thickness
Flash point	Component A > 114°C
Preparation of the support	The substrate must be consistent and free of parts that are peeling off, free from contaminants; it must be rough and free of dust and dirt.
Environmental conditions	Ambient temperature: from + 8 to 35° C Temperature of the support: > 5° C Humidity: 0 - 75 %
Drying and hardening time	Drying depends on the environmental conditions: temperature, humidity; on the substrate and on the thickness. Minimum 24 hours
Application	Spatula
Shelf life	1 year in a cool and dry place (max 40° C)
Packs	Comp A Kg. 25