

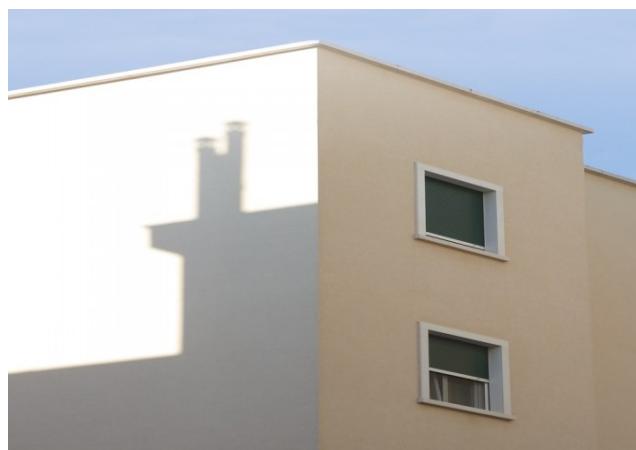
MUROFIX IN



Water - based primer

Good penetration

It is suitable for internal places



Code

0637

Description

Water - dilutable stabilizing fixative based on acrylic - styrene copolymers for internal use. Since it is pigmented, it gives an initial coverage of the substrate.

Use

This product is suitable for consolidating and making uniform new and old plasters, concrete surfaces, old paints, provided they are dry and well adherent. In addition to improving the characteristics of the plaster, « MUROFIX IN » allows a better application of all wall coverings favoring the perfect anchorage..

Appearance of the film

matt

Colour

White - color chart

Component

1

Hardening

Physical hardening through evaporation of solvents and union of the polymer

Specific weight	1,370 gr/ml
Volume of solids	45,5%
VOC	15 gr/ liter
Minimum thickness	50 micron
Estimated yield	9,1 m ² / litre for a thickness of 50 microns
Flash point	Component A >113°
Preparation of surfaces	Make sure that the substrate is well dry, remove by brushing any efflorescence or all parts of old paints that are peeling off. Completely remove old layers of lime or tempera paint.
Preparation of the product	Mix the product before the use
Thinning	30 - 40% with water
Environmental conditions	Ambient temperature: from + 5 to 35° C Temperature of the support: > 5° C Humidity: 0 - 75 % Avoid application in the presence of surface condensation or under direct sunlight.
Drying and hardening time	At 25° C and 65 % UR 35 - 45 minutes
Time of overpainting	4 - 5 hours

Application

Brush, roller

If you use the brush, you have to use nylon or natural bristle brushes.

If you use the roller, you have to use medium - haired rollers.

For the application, it is necessary to use the method of crossing coats.

Shelf life

1 year in a cool and dry place (max 40° C)

Packs

Lt. 14 Lt. 5

