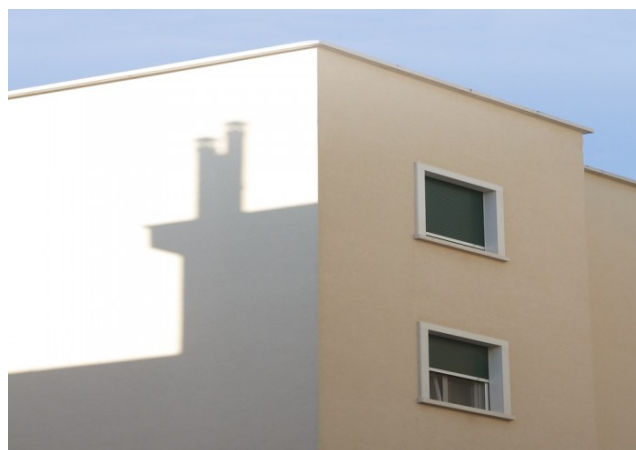


SILOX PRIMER



Fixative based on polysiloxanes

Water - repellent consolidating product



Code

0601

Description

Fixative based on polysiloxanes and acrylic resins

Use

This product is used for the consolidation and impregnation of mineral substrates, that are poorly absorbent.
It does not change the breathability of the substrate and it has a good consolidating power.
It can be applied on new and old plasters, old organic or mineral paints, as long as they are well adherent

Appearance of the film

Matt

Component

1

Hardening

Physical hardening through evaporation of water and union of the polymer

Specific weight

From 1,130 gr/ml

VOC

10 gr/ liter

Estimated yield

18 - 20 m² / litre for thicknesses with medium porosity

Flash point

Component A > 114°C

Preparation of surfaces

Plasters:
Make sure that the substrate has passed a maturation time of 28 days and that its humidity is less than 10 %.
Remove any efflorescence by washing and brushing.
Old paints based on tempera or lime should be removed.

Preparation of the product

Product ready to use. Mix the product before the use.
Component A 100
Water 25 - 30 %

Environmental conditions

Ambient temperature: from + 5 to 40° C
Temperature of the support: > 10° C
Humidity: 0 - 75 %
In order to prevent the formation of condensation, it is necessary that the temperature of the substrate is at least 3° C above the dew point.
Avoid the application in the presence of excessive condensation or under direct sunlight

Drying and hardening time

	10° C	20° C	30° C
Dry to touch	6	2	1 hours
Dry in depth	18	12	6 hours

Time of overpainting

Minimum (hours)	10° C	20° C	30° C
	18	12	6 hours
Maximum	unlimited in the absence of contaminants		

Application

Brush, roller
If you use the brush, you have to use nylon or natural bristle brushes.
If you use the roller, you have to use medium - haired rollers.
For the application, it is necessary to use the method of crossing coats.

Shelf life

1 year in a cool and dry place (min 5° C - max 35° C)

Packs

Lt. 20, Lt. 5 , Lt. 1

