

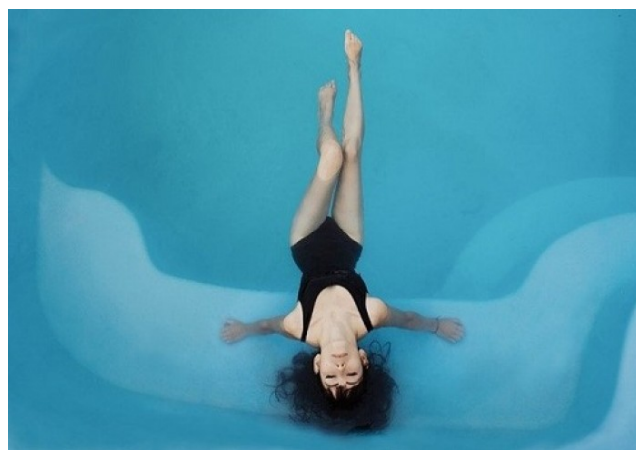
Toplacaucciù



Excellent adhesion on cement and old paints

Resistant to continuous immersion in water

Excellent UV resistance



Code	0108
Description	Solvent-based modified vinyl-acrylic resin-based paint with good penetrating power
Use	For the protection of new and painted concrete swimming pools
Appearance of the film	matt
Colour	Light blue
Component	1
Hardening	Physical by evaporation of solvents
Specific weight	1,400

Volume of solids	38%											
Voc	600 gr/lt											
Estimated yield	5 -6 m²/L per layer and on smooth and medium absorption surfaces.											
Flash point	34°C											
Preparation of surfaces	<p>New surfaces: Make sure that the surface is free from humidity, remove any efflorescence by brushing.</p> <p>Old surfaces: Remove any peeling parts, level out any irregularities, seal any cracks.</p> <p>Old paintings: Remove by brushing peeling paints and other contaminants. In case of mould, do a preventive wash with a suitable restorer before brushing.</p> <p>Wait at least 4 days from the application of the product to fill the tub or swimming pool with water.</p>											
Preparation of the product	<p>Mix the product before use and add the thinner.</p> <table><tr><td>Component A</td><td>100</td><td></td><td></td></tr><tr><td>Thinner</td><td>max 20% -25%</td><td>synthetic thinner</td><td></td></tr></table>				Component A	100			Thinner	max 20% -25%	synthetic thinner	
Component A	100											
Thinner	max 20% -25%	synthetic thinner										
Environmental conditions	<p>Ambient temperature: from + 5 to 40°C</p> <p>Temperature of the surface: > di 10°C</p> <p>Humidity: 0 – 80 %</p> <p>Humidity of the surface < 10%</p> <p>To prevent the formation of condensation the temperature of the surface must be at least 3°C higher than the dew point.</p>											
Drying and hardening times	10°C	20°C	30°C									
	Dry to touch	6	3	2 hrs								
	Dry in depth	12	6	4								

Time for overpainting

Minimum (hrs)	10°C	20°C	30°C
	12	6	4
Maximum	Unlimited, except for the presence of contaminants on the surface		

Application

Brush, roller spray
For brush applications use nylon or pure bristle brushes.
For roller applications use medium pile rollers.
For the application use the method of the crossed hands

Shelf life

2 years in a cool and dry place (max 40°C)

Packs

Lt. 0,750 - Lt. 4 - Lt. 16

