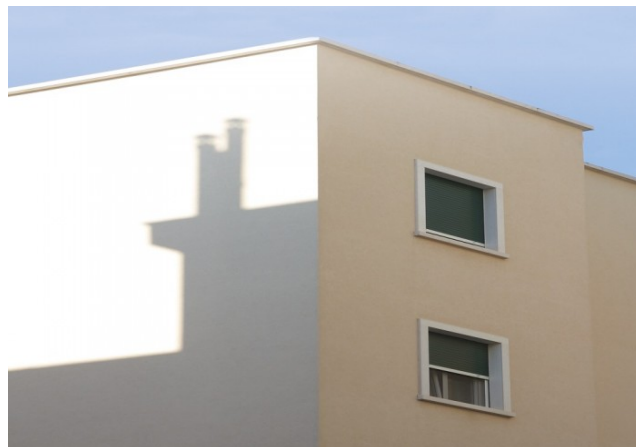


RESIN GLASS - TRASPARENTE LUCIDO



Glossy

Super washable



Code	0608
Description	Transparent glossy finish based on acrylic emulsions that gives the substrate, once applied, an excellent washability.
Use	This product is used on wall paints in order to increase the resistance to washability and to stand out the colors.
Appearance	Milky thixotropic liquid
Component	1
Hardening	Physical hardening through evaporation of water and union of the polymer
Specific weight	1,03 gr / ml
Estimated yield	5 - 6 mq/liter
flash point	> 120°C

Preparation of surfaces

The surfaces must be well dry and free of dust and extraneous matters

Environmental conditions

Ambient temperature: from + 8 to 30° C
Temperature of the support: > 5° C
Humidity: 0 - 75 %

Drying and hardening time

At 20° C and 65 % UR
About 4 - 5 hours

Packs

Comp. A Lt. 20 Lt. 5 Lt. 1

Shelf life

2 years in a cool and dry place (max 40° C)